

---

---

فلسطين  
فلسطين

2005

:	
---	--

--

/

.2000

( ) "

2003

" "

( )

" "

-

.1967 / 4



%80

.1998

2000

2000 /

600

:  
( ( ) )  
( )

-

(2004 / )

**600**

(3)

(2)

(1) :

(6)

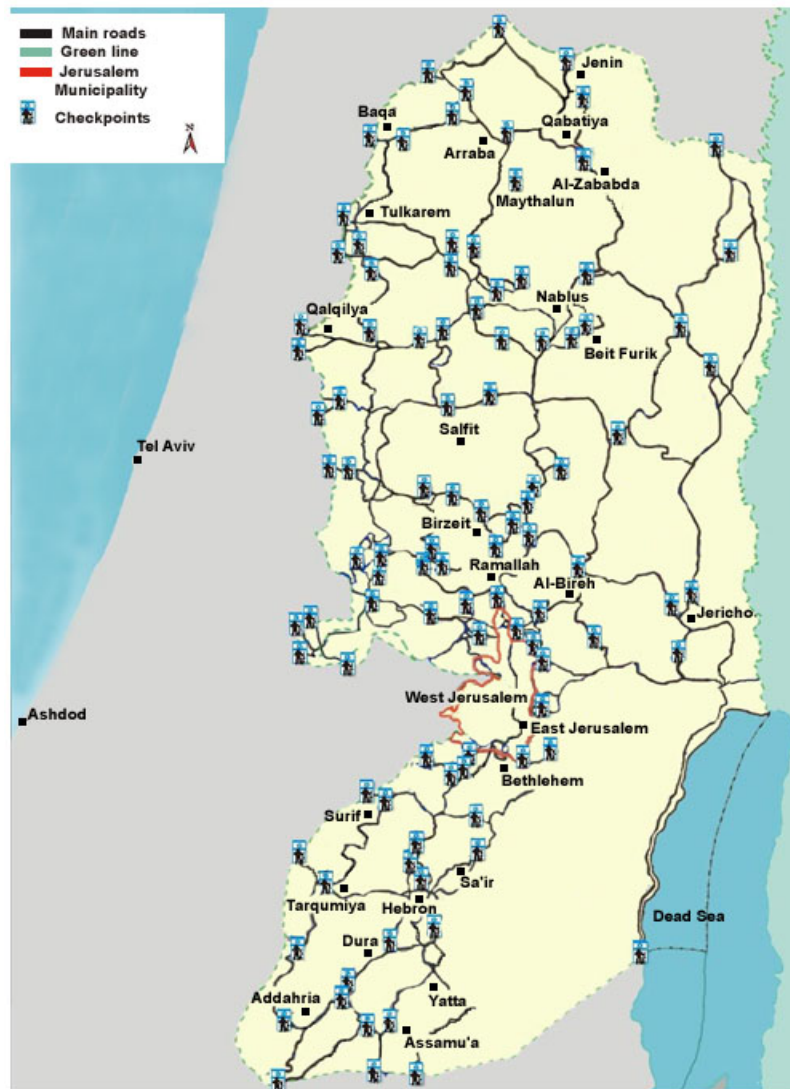
(5)

(4)

%45

%34

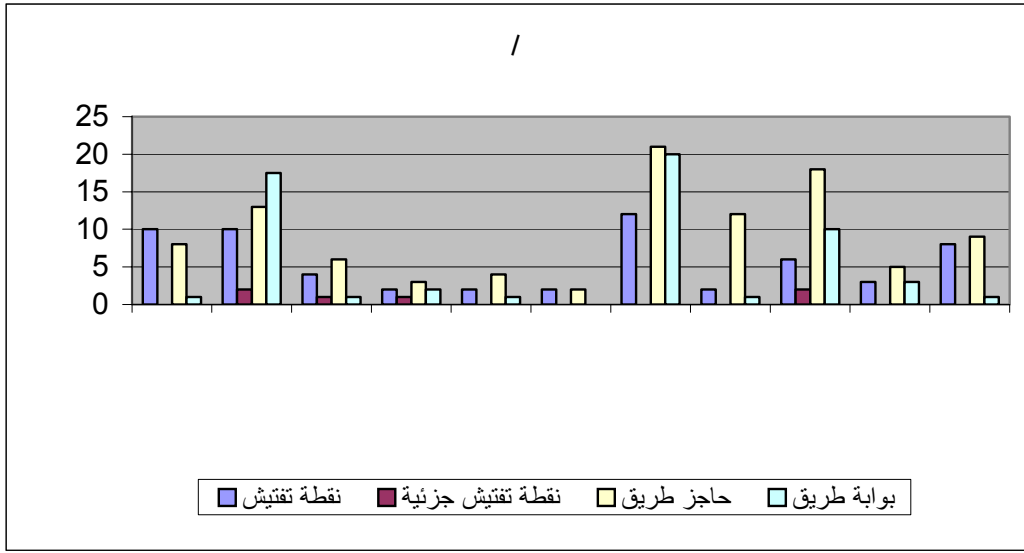
2000



:

(2004 / )

- .



605 2005 / 12

605 .2004 / 680

.( ) 75

: 75

34 -1

16 -2

12 -3

(92)

) "

"

(

:

"

"

-1

-2

.( )

.( )

/2001/

( )

/14/

:( )

5 4

200

150

50

.( )

150-100      2000      /      28

700-600

:

-1

250

400-350

-2

200-100

-3

600-200

-4

-5

/      28

:

(      )

)

(      )

40-30

(

(% 80 )

200-150

%20

( )

:

)

.( )

(

)

.(

3

( ) 4

12-7

)

( )

20000

(

450 250

( 105-58)

%60

%40

( 58-46) 250 200



/

2.4

--	--

1
---

" "

( )

( )

---

Adapted from Trade and Transport Facilitation, A Toolkit for Audit, Analysis and Remedial Action, - Washington, D.C.: The World Bank Group, April 2000. <sup>1</sup>

" "

( )



"

:

"

:

..."

...

/' /

2"

:

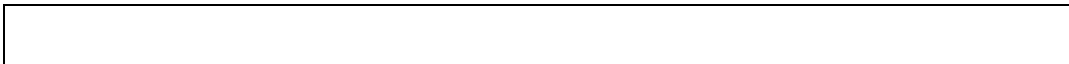
"

14.5- ) 2006 2.5  
 30 .( 2006  
 2006 3.4 2006

.( 27) 2006 23  
 ) 2006 46  
 .( %56

2006 9.2  
 . 0.8-  
 2006

.<sup>3</sup>1999 31.5



(1) :

(2)

( )

---

Four Years – Intifada, Closures and Palestinian Economic Crisis: An Assessment, the World Bank <sup>2</sup>

Group, October 2004.

Four Years – Intifada, Closures and Palestinian Economic Crisis: An Assessment, the World Bank <sup>3</sup>

Group, October 2004.

.2004

/

"

"

/

22

:

			( )
	3	6	
	3	3	
	3	3	
( )	1	3	
	0	2	
	0	1	
) (	0	2	
	1	1	
:	3	3	
	4	4	
) (	4	4	
	22		



--	--

--

"

"

( )

(Asycuda) "

"

3

30000

.( )

/

2- 1-

"

"

.

.

.

.

.

-

.

.

.

.

( )

.

10

)

--	--

)

.(

:

.1

.2

.( )

/

.3

.4

.5

.6

.7

-

( )

)

(

700

.( )

.1

( )

.2

.3

" "

.4

.5

.6

.7

.8

.9



.10

2- 1-

.11

.12

.13

.( / )

.14

.15

)

.( ' :

.16

.17



.18

.19

.( )  
/

.20

.21

.22

.23

.24

2005

.25



.26

.27



.28

.29